



North Celtic Sea

Positive Energy for a Sustainable Future



NORTH CELTIC SEA GEOTECHNICAL SURVEYS

Survey summary:

Duration: start of August to end of September 2022 (weather dependant)



CPT (Cone Penetration Testing)

A CPT rig (shown left) will be lowered to the seabed from a suitable vessel. A cylindrical penetrometer with a conical tip (cone with a c. 4.5 cm diameter) will then be pushed into the seabed at a constant speed until it meets resistance. The cone will then be returned to the rig and the rig returned to the vessel.

Borehole

A borehole is a method of drilling into the seabed to recover samples and allow downhole geotechnical testing to be carried out. A drilling head is lowered to the seabed via a drill string. The borehole diameter will be c. 15cm (6 inches). The boreholes will be left to back-fill naturally. (Borehole seabed samples shown left.)

Purpose of survey:

Provide important information on the seabed conditions to determine suitable areas within the survey area for locations of wind turbines and to determine suitable foundation designs.

Vessel Name:

Fugro Voyager (9V3888)

Vessel Operator: Fugro

Marine Notice: No. 48 of 2022



Fugro Voyager

Fishing and survey co-existence:

Engagement

Energia has engaged with fishermen and fishing industry representatives over the past 24 months in relation to the North Celtic Sea project to understand the views of fishing industry and the existing activity within the survey area.

Feedback

In response to feedback in relation to interactions between fishing activities and surveying activities, Energia committed to gathering information on existing fishing activities in the area and to use that information to determine the potential for interaction. Energia has been surveying fishing activity in the area on a largely monthly basis since May 2020. This information along with direct feedback from fishermen has directly fed into our survey planning.

Approach

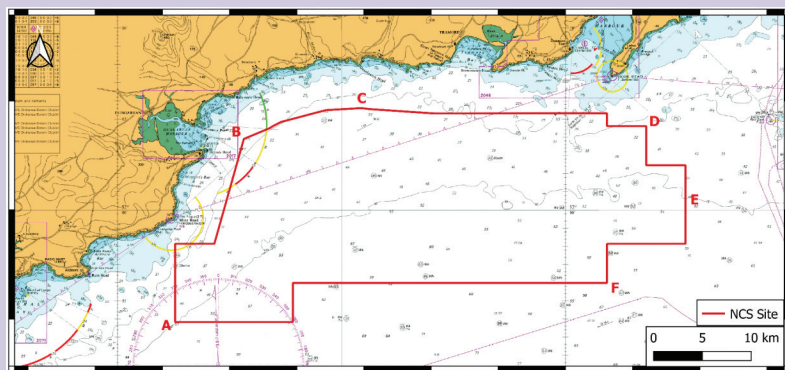
Energia is utilising a co-existence approach to the planned survey activity where fishing can continue during the survey period.

This co-existence approach means that Energia will not be asking fishermen to stop fishing or to clear the survey area of gear for the duration of the survey.

High level project timeline: Submission of planning – Q3 2023

Earliest start of construction – Q1 2026

Refer to www.northcelticseawind.ie for further details



Ongoing
communication:

Mark O'Reilly
021 203 1005

flo@northcelticseawind.ie
www.northcelticseawind.ie

energía
Renewables